

# FINANCIAL SNAPSHOT

## For fiscal year ended June 30, 2023

### ASSETS

CURRENT ASSETS	FY 22-23	FY 21-22
Cash and Cash Equivalents	\$1,108,487	\$2,834,437
Grants Receivable	3,174,145	1,224,277
Pledges Receivable, net	608,271	780,315
Inventory	956,789	702,032
Prepaid Expenses	234,636	260,616
<b>TOTAL CURRENT ASSETS</b>	<b>\$6,082,328</b>	<b>\$5,801,677</b>
NON-CURRENT ASSETS		
Restricted Cash	\$1,377,728	\$4,759,612
Investments in Marketable Securities	5,611,634	5,712,856
Deposits and Other Assets	130,495	146,533
Pledges Receivable — non-current	265,000	230,000
Pledges Receivable — Capital Campaign, net	903,564	616,570
NMTC Loans Receivable	26,389,390	26,389,390
Property and Equipment, net	41,284,032	38,756,926
Operating Lease Right-of Use Assets	3,264,840	0
<b>TOTAL NON-CURRENT ASSETS</b>	<b>\$79,226,683</b>	<b>\$76,611,887</b>
<b>TOTAL ASSETS</b>	<b>\$85,309,011</b>	<b>\$82,413,564</b>

### LIABILITIES AND NET ASSETS

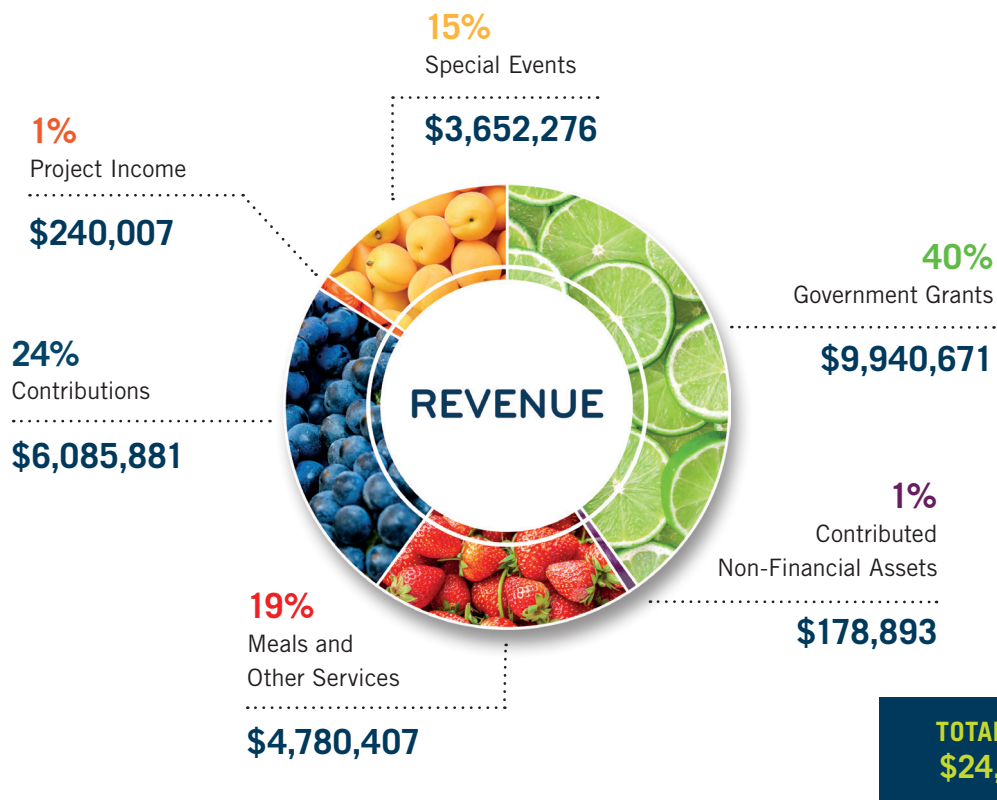
LIABILITIES	FY 22-23	FY 21-22
Accounts Payable	\$929,974	\$1,201,775
Accrued Expenses	1,567,588	1,817,326
Deferred Revenue	—	500,000
NMTC Notes Payable	37,196,311	38,421,428
Operating Lease Liabilities	3,308,975	0
Long-Term Debt	322,294	602,146
<b>TOTAL LIABILITIES</b>	<b>\$43,325,142</b>	<b>\$42,542,675</b>
NET ASSETS		
Without Donor Restrictions	\$41,718,869	\$39,240,889
With Donor Restrictions	265,000	630,000
<b>TOTAL NET ASSETS</b>	<b>\$41,983,869</b>	<b>\$39,870,889</b>
<b>TOTAL LIABILITIES AND NET ASSETS</b>	<b>\$85,309,011</b>	<b>\$82,413,564</b>

Assets and liabilities include Capital Campaign gifts and project expenditures

The financial information as of and for the year ended June 30, 2023, has been derived from the Meals on Wheels San Francisco, Inc.'s 2023 financial statements audited by Baker Tilly, US, LLP, independent auditors. Contact the organization's office for copies of the complete audited financial statements.

**FINANCIAL SNAPSHOT**  
For fiscal year ended June 30, 2023

**REVENUE AND SUPPORT – OPERATIONS**



**EXPENDITURES – OPERATIONS**

